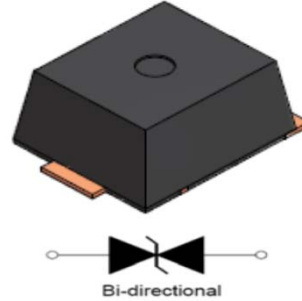


SMEJ10-***C

10KA BIDIRECTIONAL SURFACE MOUNT TRANSIENT VOLTAGE SUPPRESSOR

FEATURES

- * Plastic package has Underwriters Laboratory Flammability Classification 94V-0
- * For surface mounted applications in order to optimize board space
- * Low profile package
- * Built-in strain relief
- * Glass passivated junction
- * Low slope resistance
- * High power TVS with compact design in surface mount package
- * High temperature soldering guaranteed:
260°C/10 seconds,



MECHANICAL DATA

Case: SME molded plastic over glass Die

Mounting Position: Any

Weight: 4.0 g

1.DEVICES FOR BIPOLAR APPLICATIONS

For Bidirectional use C:

we declare that the material of product is halogen free (green epoxy compound).

MAXIMUM RATINGS AND CHARACTERISTICS

Ratings at 25°C ambient temperature unless otherwise specified.

Single phase, half wave, 60Hz, resistive or inductive load.

For capacitive load, derate current by 20%.

RATING	SYMBOL	VALUE	UNITS
Peak current rating per 8/20μs IEC 61000-4-5 at T _A =25°C, (Note 1)	IPP	10	KA
Operating Temperature Range	T _J	-55 to +125	°C
Storage Temperature Range	T _{STG}	-55 to +150	°C
V(BR) Temperature Coefficient		TYP 0.1	%/°C

NOTES:

1. Non-repetitive current pulse, per Fig. 3 and derated above TA=25°C per Fig. 2.

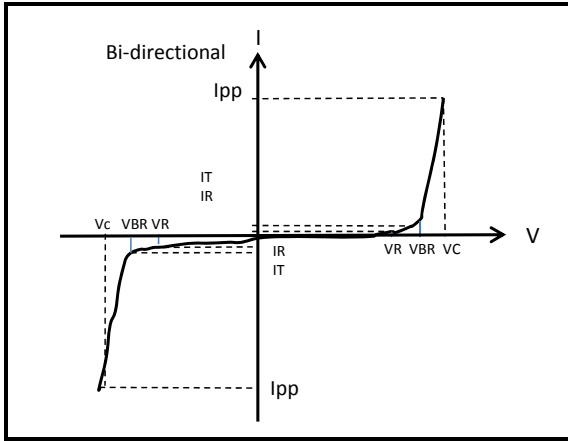
SMEJ10-***C

UNI-DIRECTIONAL PART NUMBER	Device marking code	Standoff Voltage (V_{SO}) (V)	BREAKDOWN VOLTAGE VBR (V) MIN. @ I_T	BREAKDOWN VOLTAGE VBR (V) MAX. @ I_T	TEST CURRENT I_T (mA)	MAXIMUM CLAMPING VOLTAGE @ I_{PP} VC (V)	Peak Pulse Current I_{pp} (A)	Max. Reverse Leakage (IR) @ V_{SO} (μ A)	TYP Capacitance 0 Bias 10kHz (nF)
SMEJ10-36C	10 36C	36	39	46	10	98	10000	10	10
SMEJ10-58C	10 58C	58	64	70	10	110	10000	10	8.5
SMEJ10-66C	10 66C	66	72	80	10	120	10000	10	7.5
SMEJ10-76C	10 76C	76	85	95	10	140	10000	10	6.5
SMEJ10-80C	10 80C	86	89	100	10	150	10000	10	6.5
SMEJ10-86C	10 86C	96	95	105	10	157	10000	10	6.5

SMEJ10-***C

2.Ratings and Characteristic Curves (TA = 25°C unless otherwise noted)

Fig. I-V Curve Characteristics



P_{PPM} Peak Pulse Power Dissipation --

Max power dissipation

V_R Stand-off Voltage --

Maximum voltage that can be applied to the TVS without operation

V_{BR} Breakdown Voltage --

Maximum voltage that flows through the TVS at a specified test current (I_T)

V_C Clamping Voltage --

Peak voltage measured across the TVS at a specified I_{ppm} (peak impulse current)

I_R Reverse Leakage Current --

Current measured at V_R

Fig. 2-Pulse Derating Curve

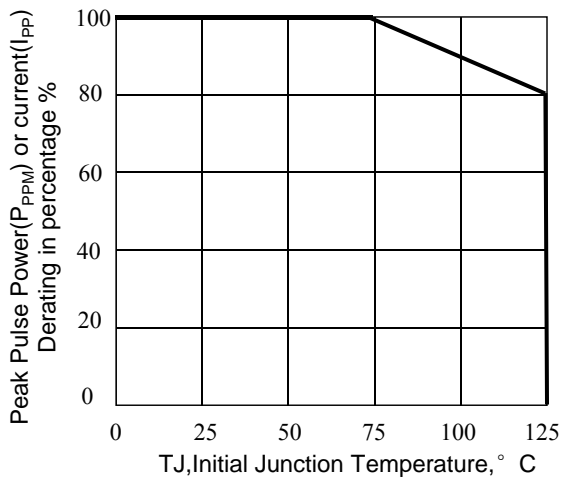
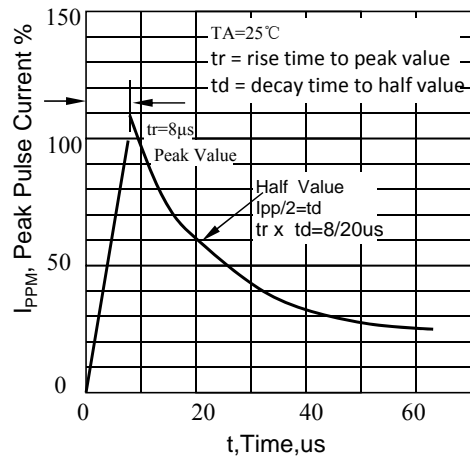
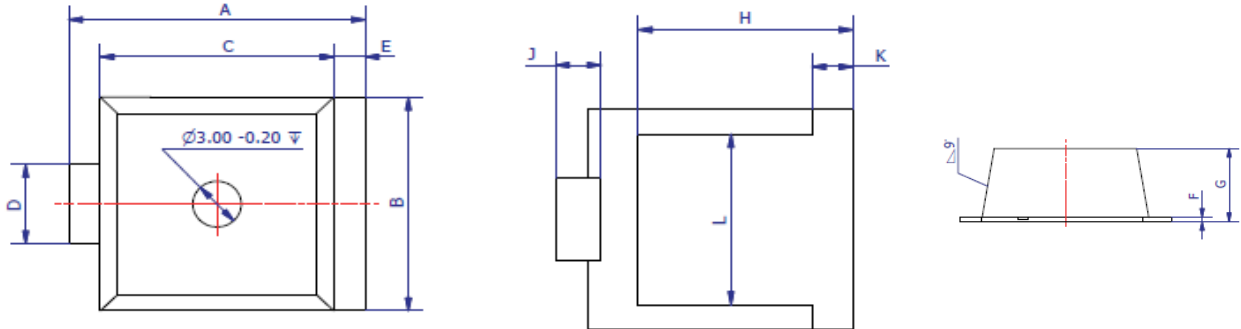


Fig. 3-Pulse Waveform



SMEJ10-***C

3. dimension:



DIM	MILLIMETERS	
	MIN	MAX
A	17.82	18.72
B	13.43	15.09
C	13.90	14.90
D	4.89	5.65
E	1.45	2.45
F	0.37	0.45
G	6.94	7.24
H	12.95	13.55
J	2.20	3.20
K	1.85	2.85
L	10.17	11.17

SMEJ10-***C

4. Update Record

版次	更新记录	更新作者	更新日期
1	试用版	周杰	2018.05.11
2	正式版	谭志伟	2018.10.30